

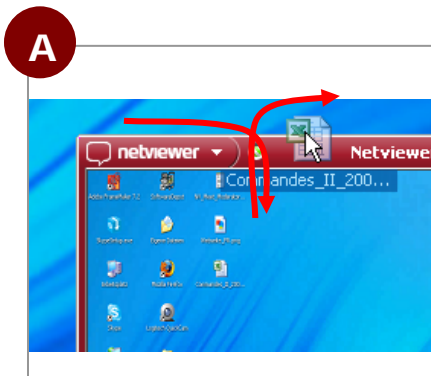
File Transfer

Session partners have three different ways to exchange files during a Netviewer session.

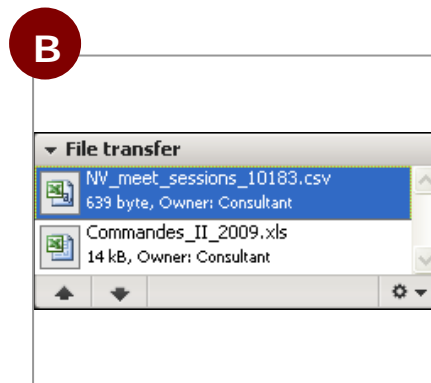
A Transfer files by dragging and dropping

B Use the File Transfer tray

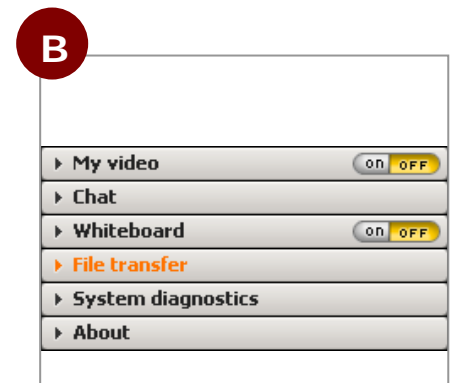
C Use File Transfer Explorer




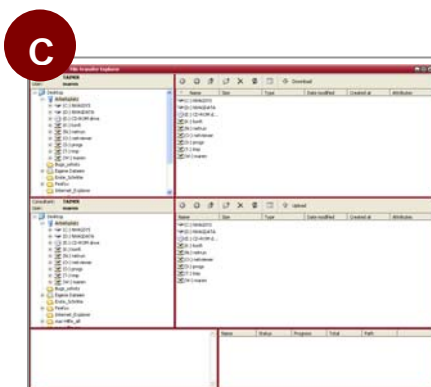
In Watch mode with activated remote control, you can drag and drop files out of and into the Netviewer window.



You can download and upload files at any time through the *File Transfer* tray.



 The tray will blink to inform the session partner that new files/folders have been made available.



Using an interface similar to Windows Explorer, you can easily transfer files or folders to the session partner, update program directories and perform other tasks.