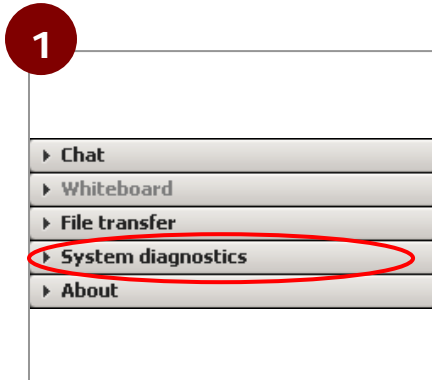
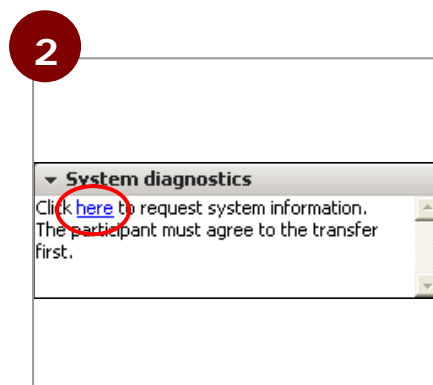


System Diagnostics

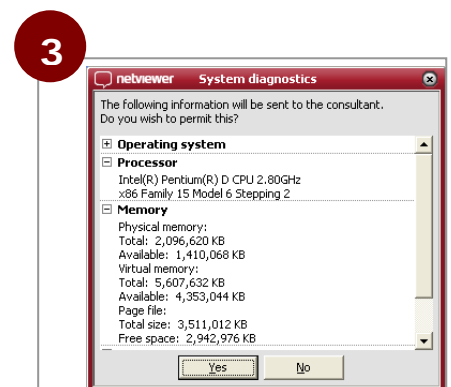
As Consultant, you can use the *System Diagnostics* tray to request and view your session partner's system data.



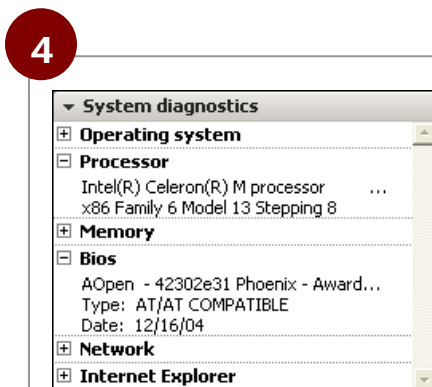
Click on the *System Diagnostics* tray's title bar to open the tray.



Click on *here* to request the system information.



Your session partner will receive a query dialog.



The information will appear in the *System Diagnostics* tray only after the session partner has agreed to transfer the information.