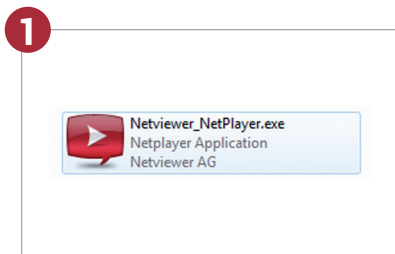


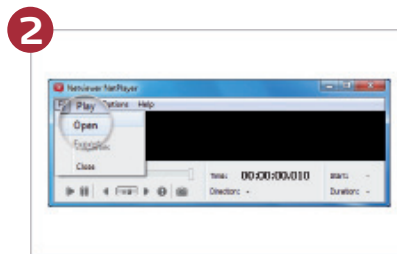
# Netviewer NetPlayer

Netviewer NetPlayer enables you to open and play back session recordings in the proprietary Netviewer file format .nvl and to later convert the .nvl file to an .asf file.

## Converting .nvl files to .asf files

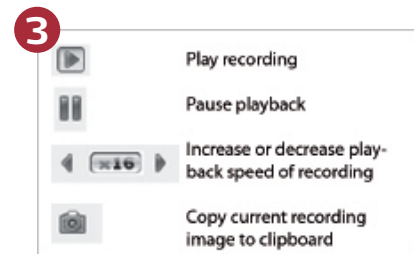


Double-click the Netviewer NetPlayer icon.



From the **File** menu select **Open**.

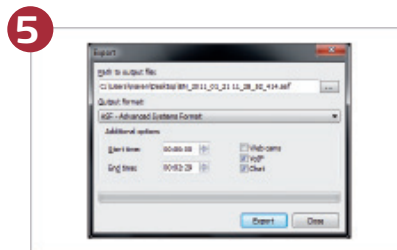
In the following „open“-dialog select the desired .nvl file.



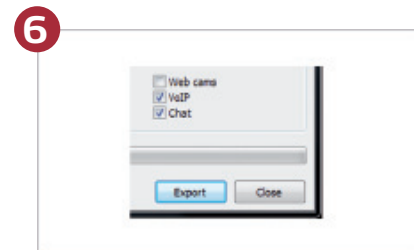
Here you have access to the functions mentioned above.



From the **File** menu select **Export**.



In the **Export** dialog, you can specify the file name and save location and whether the video, VoIP and chat data should be exported as well.



When you click on **Export**, conversion of the .nvl file will begin. The .asf file will be created at the location you selected.