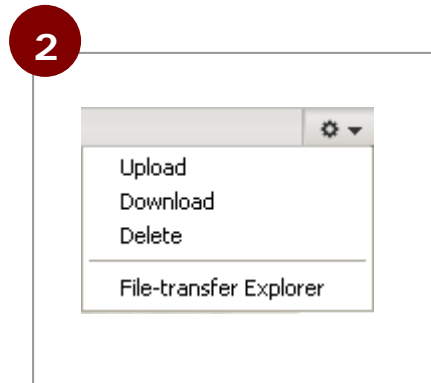


# File Transfer Explorer

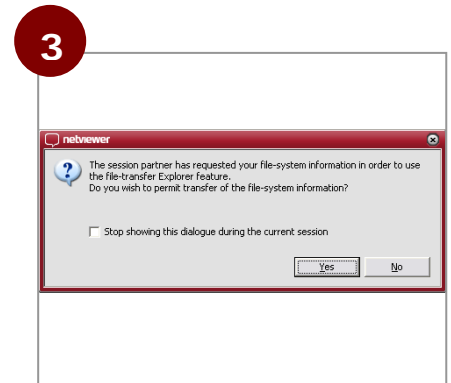
During a Netviewer session, you can use an interface similar to Windows Explorer to easily transfer files or folders to the session partner, update program directories, and perform other tasks.



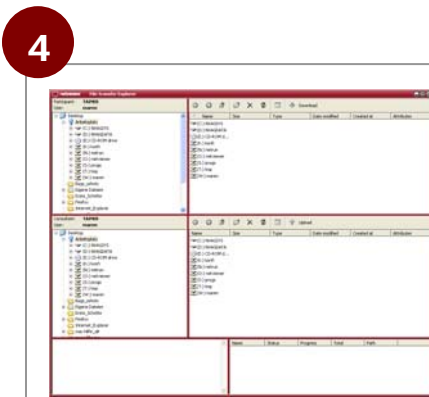
Click on the *File Transfer* tray's title bar to open the tray.



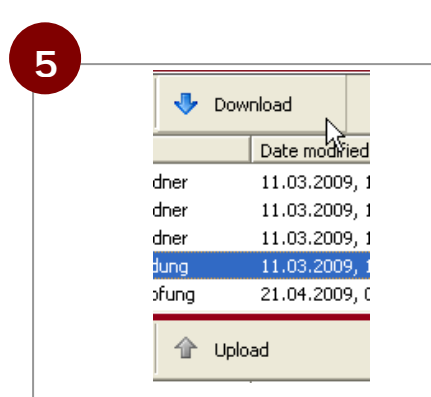
Click on the icon at the bottom right and select *File-transfer Explorer* from the menu that appears.



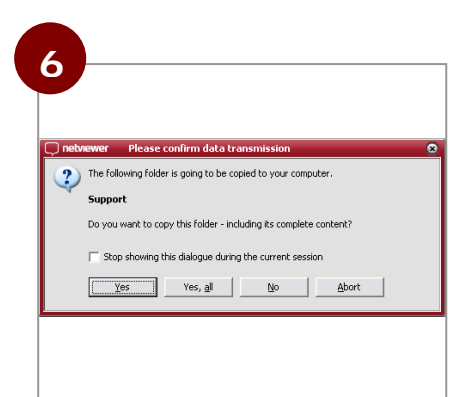
Your session partner will receive a query dialog. If the session partner agrees to transfer his or her Explorer data, File Transfer Explorer will open.



In the upper area of File Transfer Explorer, open the directory where the desired files are currently located. In the lower area open the target directory.



Use the *Download* and *Upload* buttons to move the files to the desired directory.



The session partner must approve transfer of the file from your computer to his computer (and vice versa).