

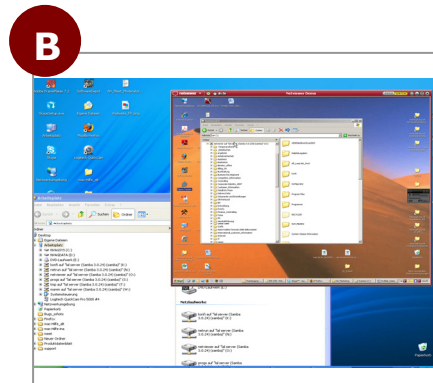
Netviewer Support 6.0

Drag & Drop File Transfer

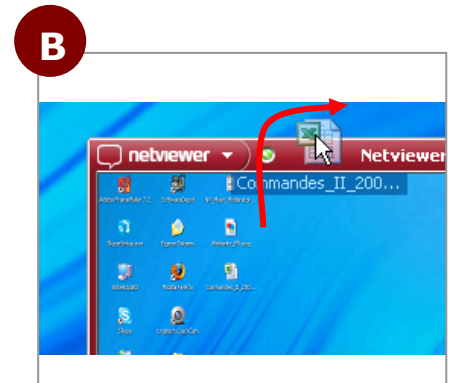
Session partners can use Drag & Drop functionality to exchange files during a Netviewer session. First make sure that you are in Watch mode and have remote control rights.



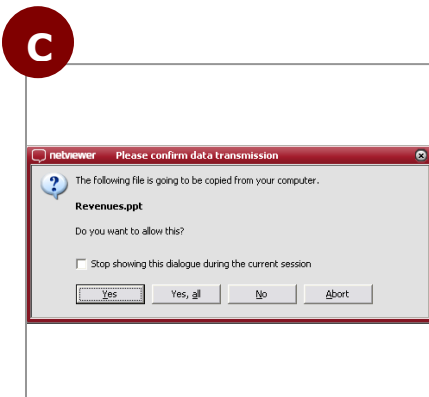
The symbol in the bar of the Netviewer window tells you if you may exchange files through Drag & Drop.



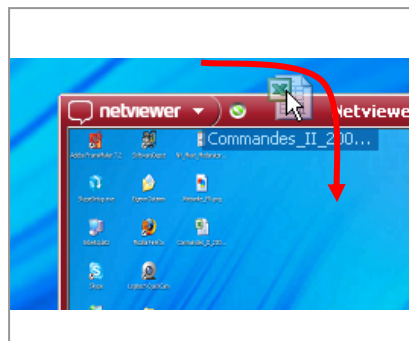
Arrange your screen in a way that facilitates access to the file administration systems (such as the desktop, Windows Explorer, or the working area) on both your screen and the transferred screen.



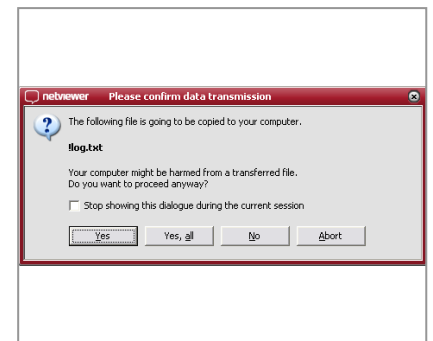
To transfer a file from your session partner's computer to your computer: Drag the desired file from the Netviewer window and drop it onto your file administration system or desktop.



The session partner must approve transfer of the file from his computer to your computer.



To transfer a file from your computer to the session partner's computer: Drag the desired file from your file administration system or desktop and drop it onto the Netviewer window.



The session partner must approve transfer of the file from your computer to his computer.