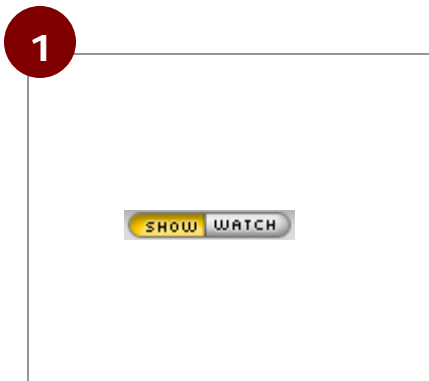


Changing direction of viewing

During a Netviewer Support session, the participant can view the consultant's screen and vice versa.

Changing the direction of viewing is very easy. Both session partners are able to change the direction of viewing.



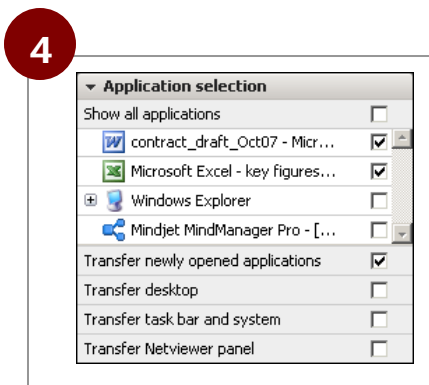
Change the direction of viewing with the *Show* and *Watch* buttons.



When showing your screen, click on *Watch* in the Mini-panel or in the Control Panel. When viewing another person's screen, click on *Show*.



The session partner must confirm his willingness to share his screen.



He can first adjust the settings in the *Application Selection* tray. By doing so, he defines which applications will be transferred. He can then confirm the query.



As soon as the session partner has agreed to transfer his screen, you will see the transferred screen with the released applications.