



Functions

- Desktop sharing
- Pointer
- Ability to change direction of viewing
- Remote control
- Preview monitor
- Multi-user video (max. resolution 320x240 pixel)
- Telephone conference
- Chat
- Voice over IP
- Asynchronous file transfer
- Survey manager
- Co-moderators
- User administration
- Profile administration
- Session planner with e-mail-invitation function and assistant mode
- Automatic language identification in invitation function
- Session recording (.nvl file format)
- Protocols/Logging
- Application selection
- Whiteboard
- Event mode
- Full-screen mode
- Theater mode
- Adjustable screen scaling
- Ability to freely position user interface modules
- Feedback icons (emoticons)
- Shortcut support
- Usage statistics

Netviewer Meet 6.3

Business Edition for Windows

General Information

The web-conferencing software Netviewer Meet enables distant meeting participants to interactively and simultaneously work together on documents and communicate via VoIP and video.

Netviewer Meet consists of the moderator and the participant program. The moderator program enables the meeting moderator to set up a Netviewer session and to access a variety of administrative tools. The participant program allows the participant to enter a session established by the moderator.

This data sheet contains the technical data of the software in SaaS mode (Software-as-a-Service). This means that the communication between the client-programs is managed by servers which are hosted by Netviewer AG.

	Moderator program	Participant program
Application	Executable file (.exe)	Executable file (.exe)
Installation	no optional installation of plug-ins	no
Subject to licence	yes	no
Compatibility	yes, from version 6.0 to current	Yes, from version 6.0 to current

Netviewer Meet can be extensively adapted to meet bespoke customer requirements.

- Various settings can be adapted by the customer with the help of profiles.
- The user interface can be customized to the customer's corporate design.
- The available functions are controllable for integration purposes by means of request parameters.

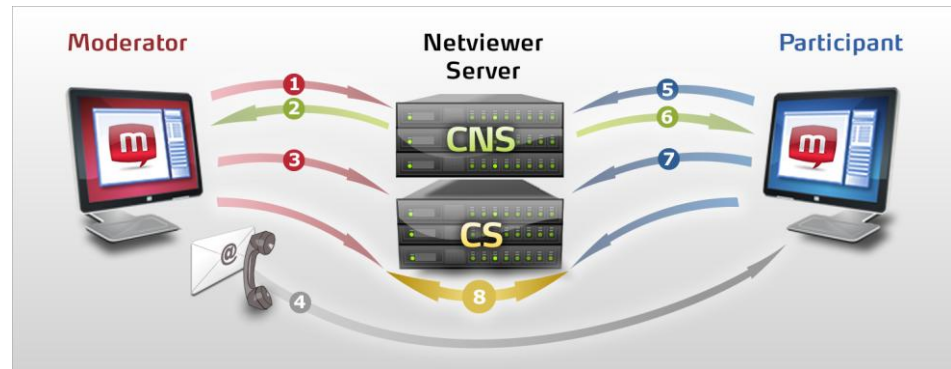
System requirements

Supported operating systems	Windows 2000, XP, Vista, Windows 7 Windows Server 2000, 2003, 2008 – R2 (support of 32-bit and 64-bit versions of Windows)
Processor	At least 1 GHz, using VoIP and video at least 2 GHz
Memory requirement	At least 1GB RAM
Graphics card	At least 128 MB RAM
Optional hardware	Headset Webcam
	Multimedia devices must be at least DirectX 8.1-compatible
Internet connection	At least 64 KBit/s (ISDN) for only desktop-sharing At least 2 MBit/s (DSL) for desktop-sharing with VoIP and Video and 3 participants in a session You will find further information in our Netviewer White Paper consulting the topic "bandwidth".

If your system does not fulfill the requirements described above or if your audio, webcam, and graphics drivers are not up-to-date, you may experience functional limitations in the Netviewer applications.

Technical Operation

Connection establishment



1. Moderator starts Moderator program, moderator program contacts Connection Server (CNS)
2. CNS authenticates moderator and sends back 9-digit session number and URL of Communication Server (CS) to moderator.
3. Moderator program contacts CS and waits for participants.
4. Moderator transfers session number to participants by phone or e-mail.
5. Participants start participant programs and enter session number. Participant programs contact CNS.
6. CNS sends back URL of CS, where the moderator program is waiting.
7. Participant programs contact CS.
8. CS connects moderator- and participant programs – the session has been established.

In order to establish a connection, the Netviewer Server Infrastructure needs to be accessible:

Netviewer Server: *.netviewer.com

Ports: TCP-Port 2377 | TCP-Port 2000 | HTTPS-Port 443 | HTTP-Port 80

Proxy server support

Internet access can be through current proxy servers. The URL of the proxy can be delivered as follows:

- Dynamically according to the browser settings
- Entered manually by the user (with the possibility to save them)

Proxy servers with authentication are supported in the following ways:

- Automatic delivery of access data at Windows-Authentication
- Access data entered manually by the user (with possibility to save them)

Ongoing session

The data transfer during an ongoing session between the moderator and the participant program is managed by Netviewer servers.

No. of participants: Up to 100 participants/session

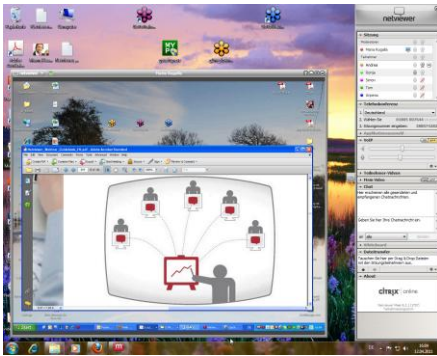
Security

- User administration and authentication in the moderator program
- Random 9-figure ID number for every session for connection establishment
- VeriSign-Certificate
- SSL/TLS-encryption of the connection establishment
- AES 256 bit encrypted data exchange
- Requests which have to be confirmed as actions are taken by the user and are subject to data protection

You will find more information in our Netviewer White Paper on "Security".

The security of Netviewer Meet has been confirmed in the following investigations:

- Security assessment of external software at Fiducia IT AG



Plug-ins

Available for the following applications, starting from the version indicated:

- Internet Explorer 8.0
- Mozilla Firefox 3.6
- Microsoft Office 2003
- Microsoft Outlook planning plug-in
- Microsoft Outlook 2003 and 2010

Add-ins

Available for the following applications, starting from the version indicated:

- Microsoft Outlook 2003
- Skype 3.6

Languages

- Dutch
- German
- English
- French
- Italian
- Polish
- Russian
- Swedish
- Spanish

Netviewer Meet

Mac version

General Information

The Mac version of the web-conferencing software Netviewer Meet enables distant meeting participants to interactively and simultaneously work together on documents and communicate via VoIP and video. Netviewer Meet consists of the moderator and the participant program in one application. The moderator program enables the meeting moderator to set up a Netviewer session. The participant program allows the participant to enter a session established by the moderator. This data sheet contains the technical data of the software in SaaS mode (Software-as-a-Service). This means that the communication between the client-programs is managed by servers which are hosted by Netviewer AG.

	Moderator program	Participant program
Application	Disk Image file (.dmg)	Disk Image file (.dmg)
Installation	no	no
Subject to licence	yes	no
Compatibility	yes, from version 6.0 to current	Yes, from version 6.0 to current

System requirements

Supported operating systems	Mac OS X 10.4 (Tiger), 10.5 (Leopard) and 10.6 (Snow Leopard)
Processor	At least. 800 MHz, Power PC G4 and G5, Intel Core Duo and Xeon
Memory requirement	At least 256 MB RAM
Graphics card	At least 32 MB RAM
Optional hardware	Headset Webcam
Internet connection	At least 64 KBit/s (ISDN) for only desktop-sharing At least 2 MBit/s (DSL) for desktop-sharing with VoIP and Video and 3 participants in a session

If your system does not fulfill the requirements described above or if your audio, webcam, and graphics drivers are not up-to-date, you may experience functional limitations in the Netviewer applications.

Technical Operation

Connection establishment

In order to establish a connection the Netviewer Server Infrastructure needs to be accessible:

Netviewer Server:	*.netviewer.com
Ports:	TCP-Port 2377 TCP-Port 2000 HTTPS-Port 443 HTTP-Port 80

Proxy server support

- Dynamically according to the browser settings
- Entered manually by the user (with the possibility to save them)

Proxy servers with authentication are supported in the following ways:

- Automatic delivery of access data at Windows-Authentication
- Access data entered manually by the user (with possibility to save them)

Ongoing session

The data transfer during an ongoing session between the moderator and the participant program is managed by Netviewer servers

Security

- User administration and authentication in the moderator program
- Random 9-figure ID number for every session for connection establishment
- VeriSign-Certificate
- SSL/TLS-encryption of the connection establishment
- AES 256 bit encrypted data exchange
- Requests which have to be confirmed as actions are taken by the user and are subject to data protection

Functions

- Desktop sharing
- Pointer
- Ability to change direction of viewing
- Remote control
- Multi-user video (max. resolution 292x219 pixel)
- Telephone conference
- Chat
- Voice over IP
- Co-moderators
- E-mail-invitation function
- Protocolling/Logging
- Ability to freely position user interface modules
- Shortcut support

Languages

- Dutch
- German
- English
- French
- Italian
- Polish
- Russian
- Swedish
- Spanish



Netviewer Meet Web client

General Information

The Netviewer Meet Web client is a web client that enables the participant to platform-independently enter Netviewer Meet sessions through a browser.

Application	Flash-based Web application
Installation	no
Subject to licence	no
Compatibility	yes, from version 6.0
No. of participants:	Up to 40 web participants/session

System requirements

Supported operating systems	Mac, Linux and Windows OS
Processor	at least 1,33 GHz
Memory requirement	at least 256 MB RAM
Graphics card	at least 128 MB RAM
Internet connection	at least 1 MBit/s (DSL)
Software	Adobe FlashPlayer from version 9.028 Internet Explorer from version 8.0, Firefox from Version 3.6 or Apple Safari from version 3.0

You will find a detailed list of requirements with regard to hardware and platforms on the Adobe homepage: <http://www.adobe.com>

If your system does not fulfill the requirements described above or if your audio, webcam, and graphics drivers are not up-to-date, you may experience functional limitations in the Netviewer applications.

Technical Operation

Connection establishment

In order to establish a connection the Netviewer Server Infrastructure needs to be accessible:

Netviewer Server:	*.netviewer.com
Ports:	HTTPS-Port 443

Proxy server support

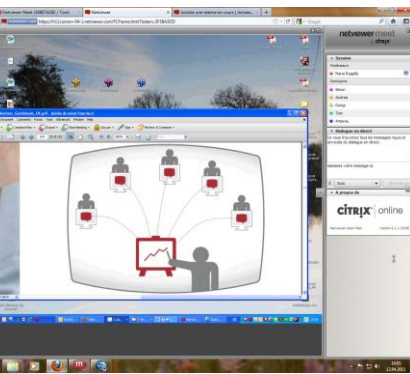
The Netviewer Meet Web client applies the proxy settings of the browser in use.

Ongoing session

The data transfer during an ongoing session between the moderator and the participant program is managed by Netviewer servers

Security

- Random 9-figure ID number for every session for connection establishment
- SSL/TLS-encryption of the connection establishment and data exchange
- Requests which have to be confirmed as actions are taken by the user and are subject to data protection



Functions

- Desktop sharing (participant in Watch mode)
- Pointer
- Remote control
- Shortcut support
- Chat
- Full-screen mode

Languages

- German
- English
- French
- Italian
- Dutch
- Polish
- Russian
- Swedish
- Spanish

Netviewer Meet

HTML Client

The Netviewer Meet HTML client is a Netviewer participant program (web application) based on HTML and JavaScript. It allows users on all platforms to join Netviewer Meet sessions via a browser or through browser-capable mobile devices.

Application	Web application based on HTML and JavaScript
Installation	not required
License	not required
Compatibility	yes in version 6.2 and higher
Number of participants:	Up to 100 participants/session (Netviewer Meet specification)

System requirements

Supported operating systems/mobile devices All mobile devices and operating systems that support and use the browsers listed below.

Supported browsers All current browsers with activated JavaScript:
Internet Explorer version 8.0 and above; Firefox version 3.6 and above; Chrome version 7.0 and above; Opera version 9.0 and above; or Apple Safari version 3.0 and above.

Processor	at least 2 GHz
Graphics card	at least 128 MB RAM
Memory requirement	at least 1 GB RAM
Internet connection	at least 2 MBit/s (such as DSL, UMTS)

If your system does not fulfill the requirements described above or if your system uses special browser extensions related to JavaScript, this may result in functional limitations in the Netviewer Meet HTML client.

Technical operation

Establishing a connection

To establish a connection, the Netviewer Server infrastructure must be reachable:

Netviewer Server: *.netviewer.com
Port: HTTPS port 443

Support for proxy servers

The Netviewer Meet HTML client uses the browser's proxy settings.

Ongoing session

The Netviewer servers handle data transmission between the Moderator and Participant programs during an ongoing session. The volume of data depends on the duration and content of the session.

Security

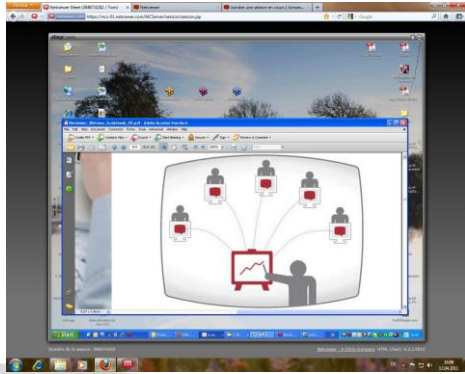
- At least nine-digit, randomly generated session number for establishing the connection
- SSL/TLS encryption of connection and session data

Functions

- Desktop sharing (participants in Watch mode)
- Chat
- Pointer
- Full-screen mode

Available languages

- German
- English
- French
- Spanish
- Italian
- Dutch
- Polish
- Russian
- Swedish





Netviewer Meet

Mobile App

The Netviewer Meets mobile apps are participant programs for Apple iOS or Google Android devices that allow users to join a Netviewer Meet session.

Application	App for mobile devices, based on HTML and JavaScript
Installation	required
License	not required
Compatibility	yes in version 6.2 and higher
Number of participants:	Up to 100 participants/session (Netviewer Meet specification)

System requirements

Supported operating systems	Apple iOS version 3.1.2 and above (iPhone, iPad, iPod touch) Google Android version 2.1 and above
Internet connection	at least 2 MBit/s (such as WLAN, UMTS)

If your system does not fulfill the requirements described above, this may result in functional limitations in the Netviewer Meet mobile client.

Technical operation

Establishing a connection

To establish a connection, the Netviewer Server infrastructure must be reachable:

Netviewer Server:	*.netviewer.com
Port:	HTTPS port 443

Ongoing session

The Netviewer servers handle data transmission between the Moderator and Participant programs during an ongoing session. The volume of data depends on the duration and content of the session.

Security

- At least nine-digit, randomly generated session number for establishing the connection
- SSL/TLS encryption of connection and session data

Functions

- Desktop sharing (participants in Watch mode)

Available languages

- German
- English
- French
- Spanish
- Italian
- Dutch
- Polish
- Russian
- Swedish