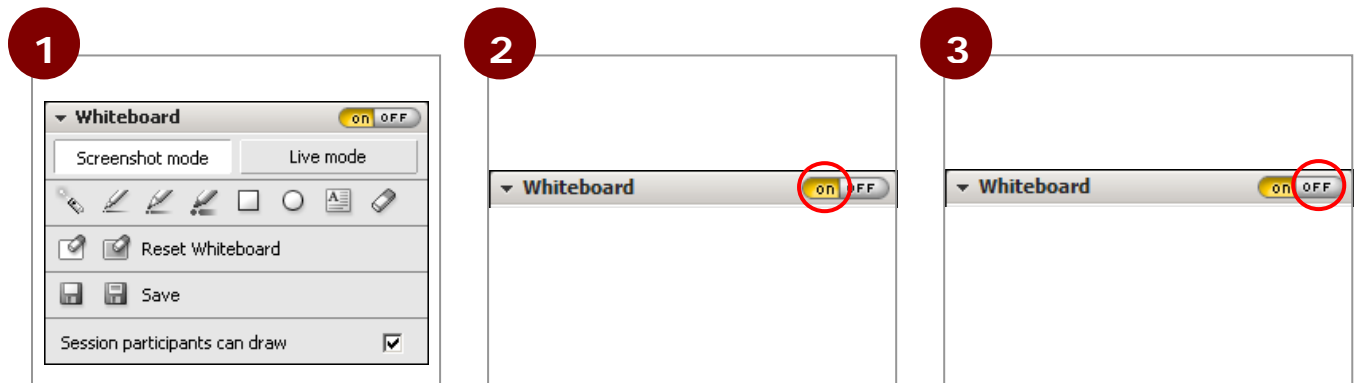


Whiteboard

The Whiteboard function allows session participants to add drawings and marks (visible for everyone) onto the transferred screen. Two modes are available in the Whiteboard tray:

A) Screenshot mode




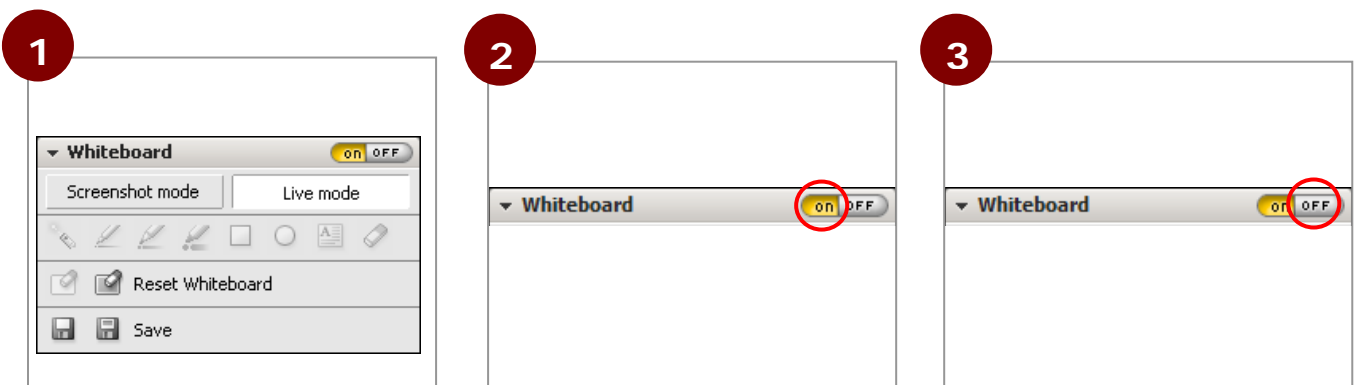
1 Make sure that you are in Show mode. In the *Whiteboard* tray, select *Screenshot mode*.

2 Activate the Whiteboard with *on*. All session participants can draw and make marks on the current screenshot.

3 Click on *off* to deactivate the Whiteboard.

B) Live mode

 Drawings and markings in Live mode are non permanent. For example: if a newly opened window covers a drawing, the drawing will be deleted.



1 Make sure that you are in Show mode. In the *Whiteboard* tray, select *Live mode*.

2 Activate the Whiteboard with *on*. Screen transmission continues without limitation and the screen retains all of its functionality. Almost all session participants can draw on the screen. The session partner in Show mode can only delete the drawings.

3 Click on *off* to deactivate the Whiteboard.