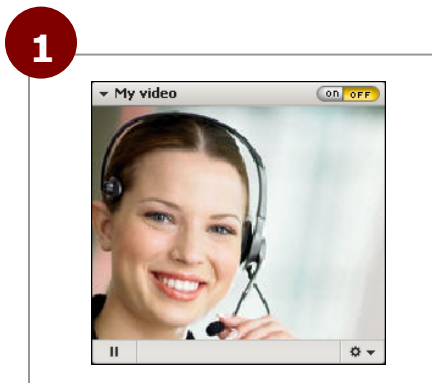
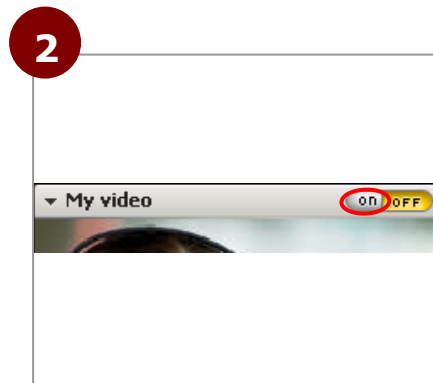


Video transmission

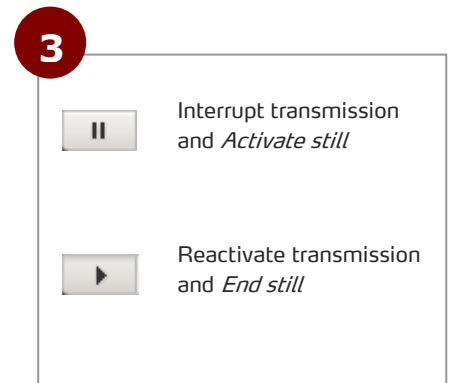
Netviewer Support enables you to view the Webcam video of your session partner as well as to transmit your own Webcam video.



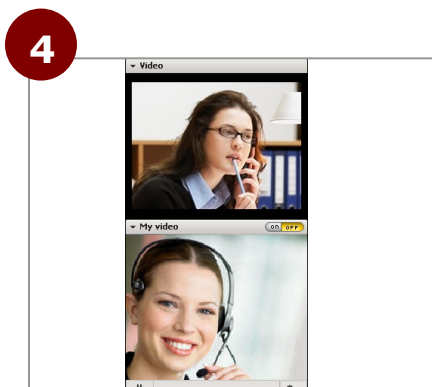
In the *My video* tray you see the video stream of your own Webcam.



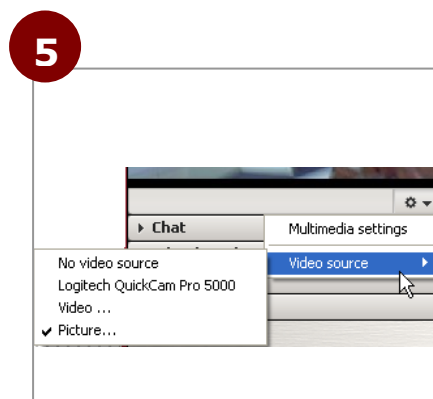
In the *My video* tray click *on* to activate transmission of your Webcam video stream to your session partner.



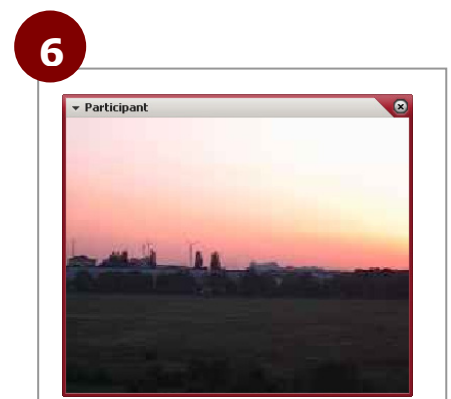
To interrupt or reactivate transmission, in the lower left of the *My video* tray click on the button *Activate still* or *End still* respectively.



In the *Video* tray you will see the video of your session partner if he has activated transmission of his video.



Tipp: Instead of transferring the video from a Webcam, you can transfer a static image (file formats .pm or .jpg). In the context menu of the *My video* tray select *Picture...* and in the following dialog choose the desired picture file.



Tipp: To show your session partner video files, in the context menu of the *My video* tray select the video file (.avi or .mpeg). To view a larger version of the video, drag the *Video* tray from the Control panel and enlarge it.