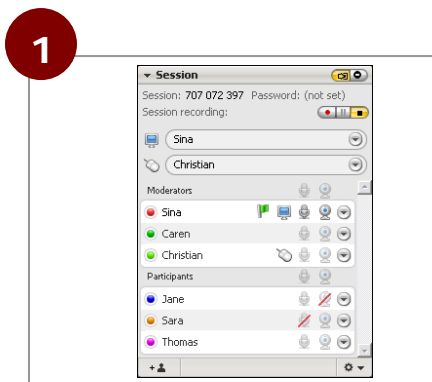


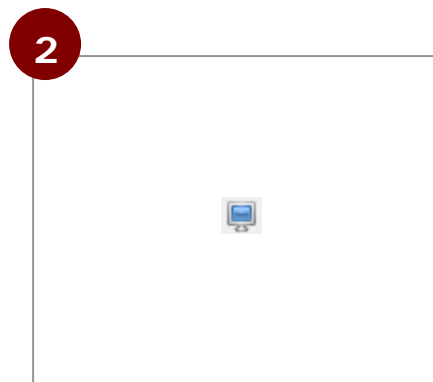
# Changing direction of viewing

During a Netviewer Meet session all participants can jointly watch the screen of the Moderator or of another session partner.

Changing the direction of viewing is very easy: As Moderator, you can grant to other session participants the right to share their screens.



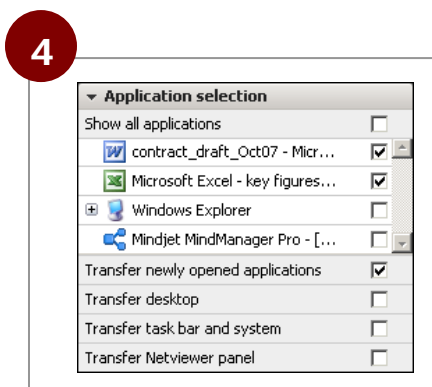
After starting the session as the Moderator, in the *session* tray you select the participant whose screen you want to show.



Drag&drop the screen symbol onto the name of the participant.



The selected participant must confirm his willingness to share his screen.



He can first adjust the settings in the *Application Selection* tray. By doing so, he defines which applications will be transferred. He can then confirm the query.



As soon as the participant has agreed to transfer his screen, all participants see the transferred screen with the released applications.