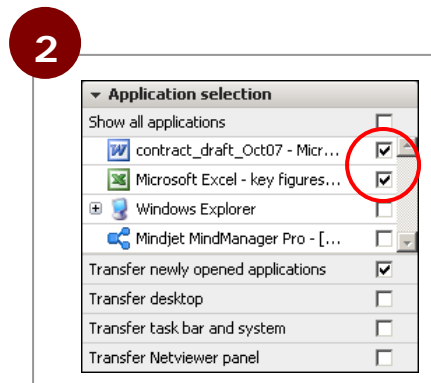


Application selection

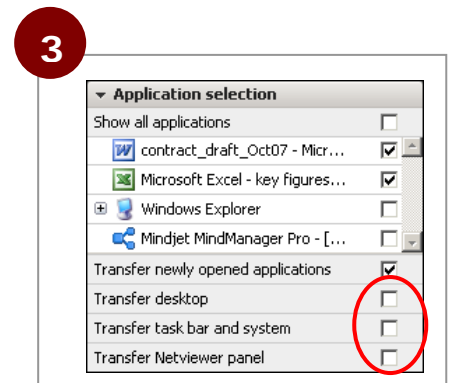
The user who shows his or her screen during a Netviewer session always retains the ability to select which applications and elements will be visible to the session partners.



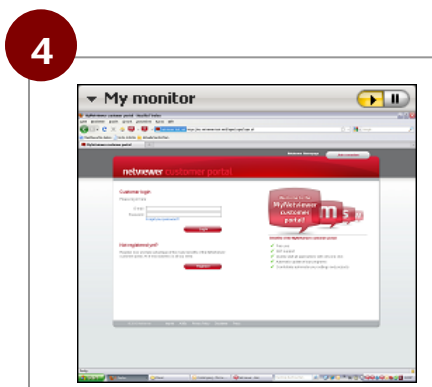
When showing your screen, click on the *Application selection* tray's title bar to open the tray.



When the tray opens, place a check mark next to each application, document, and screen element that you wish to transfer.



To block transmission of any opened applications, documents, or screen elements, remove the respective check mark.



Tip: Use the *My monitor* tray to see how your screen appears to your session partners.